

# Agenda

Friday April 4, 2014

9:00 – 10:00 am **REGISTRATION**

10:00 am **Opening Remarks**

10:05 am **Conference Weather Briefing**

***Session 1: Severe Weather Operations and Decision Support***

10:15 am **Prepare for Takeoff! Severe Weather Tools Used in Aviation Decision Support**  
Stephen Kearney, NWS-Center Weather Service Unit (CWSU), Memphis, TN

10:35 am **The El Reno Tornado: What Happened?**  
Barrett Gutter, Mississippi State University

10:55 am **Breaking Down the National Data Buoy Center and the Meteorological/Oceanographic Data Analyst's Role**  
Matthew G. Winterkorn, National Data Buoy Center/NVision Solutions, Stennis, MS

11:15 am **KEYNOTE PRESENTATION:**  
**Tornado Debris Characteristics and Trajectories during the 27 April 2011 Super Outbreak as Determined Using Social Media Data**  
John A. Knox, Ph.D., University of Georgia, Athens, GA

12:05 pm - 1:00 pm **LUNCH**

1:00 pm **\*PLATINUM SPONSOR PRESENTATION\***  
**The Science of Baron: It's what we do!**  
Stephen McCloud, Baron Services

***Session 2: Winter Weather***

2:00 pm **Application of the Scaled Predictive Ice Storm Aftermath Index in the Mid-South**  
Thomas L. Salem Jr. and Benjamin Schott, National Weather Service, Memphis, TN

2:20pm **The 28 January 2014 Winter Weather Event in Birmingham, Alabama**  
James Spann, Chief Meteorologist, ABC 33/40, Birmingham, AL

2:40 pm **The Rare 4 March 2014 Freezing Rain Event on the Gulf Coast**  
Eric Carpenter, National Weather Service, Jackson, MS

3:00 pm **The Ontario Winter Lake-effect Systems (OWLeS) Field Project: Preliminary Radar & Profiling Observations of Mesoscale Convective Snow Systems**  
Ryan Wade, Kevin Knupp, Dustin Phillips, Todd Murphy, Adam Sherrer, Aaron Mayhew, Anthony Lyza, and Brian Freitag; Severe Weather Institute- Radar & Lightning Laboratories, University of Alabama in Huntsville

3:20 pm **Winter Precipitation Type Forecasting**  
Thomas L. Salem Jr. and Joseph Lowery, National Weather Service, Memphis, TN

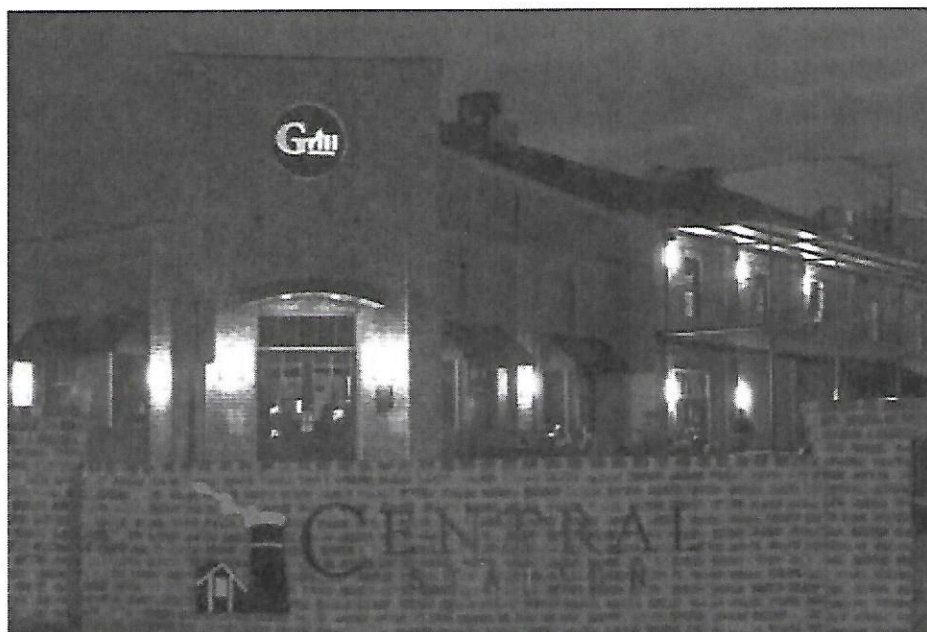
3:40 pm - 3:55 pm **BREAK**

4:00 pm **KEYNOTE PRESENTATION:**  
**Typhoon Haiyan- A Hurricane Chaser's Perspective**  
Jim Edds, Professional Extreme Cameraman

4:50 pm **Closing Remarks**

5:00 pm **END OF DAY 1**

7:00 pm **MIXER: Central Station Grill**



# Saturday April 5, 2014

8:00 am - 8:30 am **REGISTRATION**

## **Session 1: Tornado Outbreaks and Forecasting**

8:30 am **Using Teleconnection Indices to Predict Seasonal Tornado Outbreak Frequency in the United States**

Kent Sparrow and Andrew Mercer, Mississippi State University

8:50 am **Contrasting Environments Associated with Storm Prediction Center Tornado Outbreak Forecasts using Synoptic-Scale Composite Analysis**

Alyssa Bates and Andrew Mercer, Mississippi State University

9:10 am **Complex Supercell Mergers and Storm-Scale Interactions During Recent Significant Severe Weather Outbreaks**

Ryan Wade, Todd Murphy, and Kevin Knupp; Severe Weather Institute- Radar & Lightning Laboratories, University of Alabama in Huntsville

9:30 am **The Impact of Assimilating Satellite Infrared Radiance Observations on Tornado Outbreak Forecasts**

Erin Thead, Andrew Mercer, and Jamie Dyer; Mississippi State University

9:30 am - 9:40 am **BREAK**

9:40 am **KEYNOTE PRESENTATION:**

**The 1932 Tornado Outbreak- The Deadliest Tornado Outbreak in Alabama History**

Bill Murray, Weather Historian; WeatherBrains

## **Session 2: Weather and Society**

10:30 am **Geographic Distribution of Lightning Risk at College Football Stadiums**

Matthew Reagan, Mississippi State University

10:50 am **What does the Flood Stage "X" Really Mean?**

Jared Allen, National Weather Service, Jackson, MS

11:10 am **The NASA DEVELOP National Program**

Walt Clark, NASA DEVELOP National Program, Mobile, AL

11:30 am **NEXRAD Data Dealiasing Problems Impacting Television Coverage of Severe Weather**

Kevin B. Laws, National Weather Service, Birmingham, AL

11:50 am - 1:10 pm **LUNCH**

12:40 pm **POSTER SESSION** (Last 30 minutes of Lunch)

***Session 3: Tornadoic Storms: Nowcasting***

1:10 pm **Preliminary Observations of Potential Terrain Influences on Tornadogenesis, Track and Intensity**  
Anthony W. Lysa, Todd Murphy, Ryan Wade, and Kevin Knupp; Severe Weather Institute- Radar & Lightning Laboratories, University of Alabama in Huntsville

1:30 pm **The Relationship between Tornadoic Debris Signature Height and Tornado Intensity**  
Chad Entremont and Daniel Lamb, National Weather Service, Jackson, MS

1:50 pm **Possible Seasonal Variations in the Relationship between Tornadoic Debris Signature Height and Tornado Intensity**  
Thomas L. Salem Jr., National Weather Service, Memphis, TN

2:10 pm **Improved Severe Weather Verification and its Effect on Local Severe Storm Climatology and Research**  
Jason T. Deese, National Weather Service, Peachtree City, GA

2:30 pm – 2:40 pm **BREAK**

2:40 pm **\*PLATINUM SPONSOR PRESENTATION\***  
**Preparing a National Weather Broadcast and a 24/7 Network**  
Mark Mancuso, Accuweather, Stage College, PA

***Session 4: Severe and Tropical Weather: Forecasting and Nowcasting***

3:00 pm **The Importance of Synoptic-Scale Process in Diagnosing Tropical Cyclone Rapid Intensification in the Atlantic Basin**  
Alexandria Grimes and Andrew Mercer, Mississippi State University

3:20 pm **Halloween 2013 Post-Mortem**  
Andrew Chiuppi III, National Weather Service, Memphis, TN

3:40 pm **Total Lightning as an Indicator of Mesocyclone Behavior**  
Sarah Stough and Lawrence Carey, Severe Weather Institute- Radar & Lightning Laboratories, University of Alabama in Huntsville; Christopher Schultz, NASA Marshall Space Flight Center

4:00 pm **Preliminary Results from the Mississippi State/NWS Memphis Mobile Sounding Project**  
Jonathan L. Howell, National Weather Service, Memphis, TN; Matthew H. Reagan, Mississippi State University

4:20 pm **Polygonology: A Realistic Look at the National Weather Service Polygon Warning System**  
Kevin Laws, National Weather Service, Birmingham, AL

4:40 pm **KEYNOTE PRESENTATION:**

**The History of Severe Weather Warnings and Where We are Heading in 2014 and Beyond**

Bruce Thomas, NWA Past President 2014, Chief Meteorologist and National Spokesman, Midland Radio

5:30 pm **CLOSING REMARKS**

**End of the 12<sup>th</sup> Annual Southeast Severe Storms Symposium**

